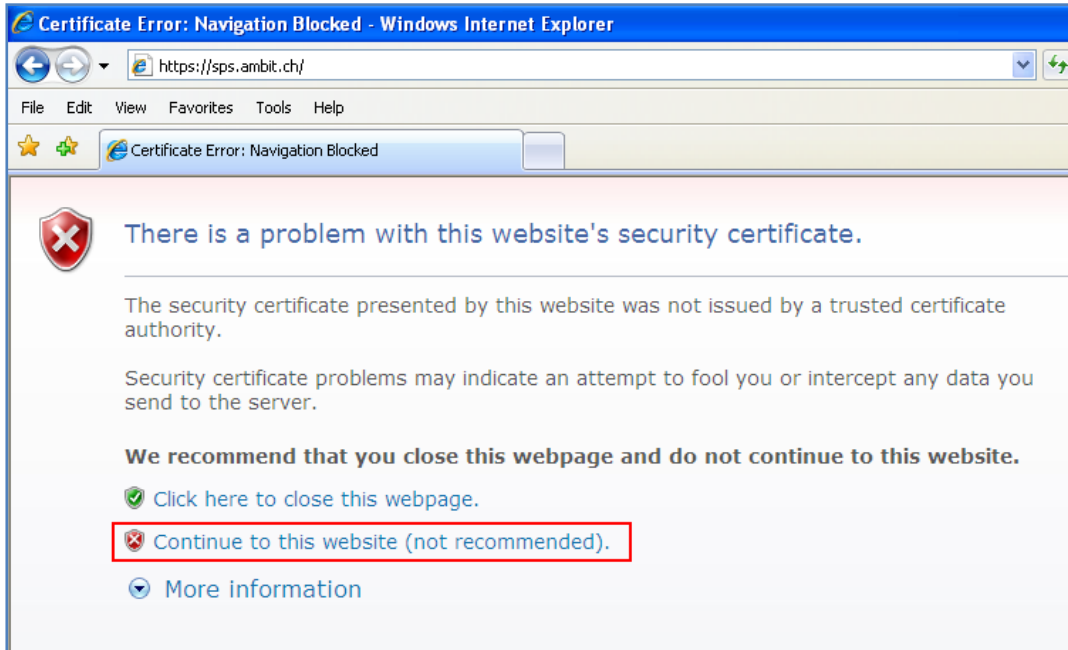


Certificate Import

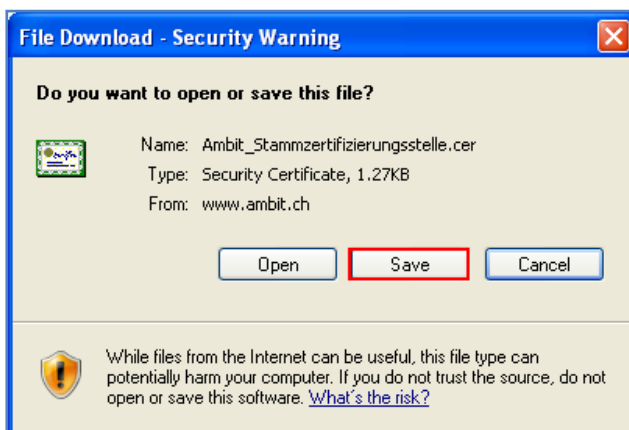
Please apply the Ambit security certificate for a trusted and secure SSL-connection to access our customer portal (Microsoft SharePoint)

The following message appears if the certificate is not installed:



Choose "Continue to this website (not recommended)."

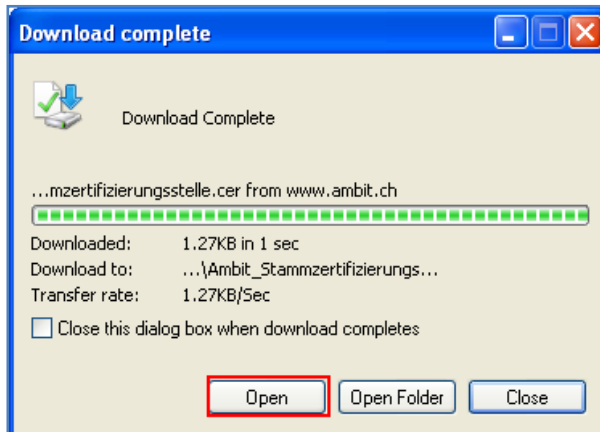
Download and save the Ambit Security Certificate from our support site <http://www.ambit.ch/crm-support.html> or use the following download link: http://www.ambit.ch/fileadmin/dateien/dokumente/Ambit_Stammzertifizierungsstelle.cer



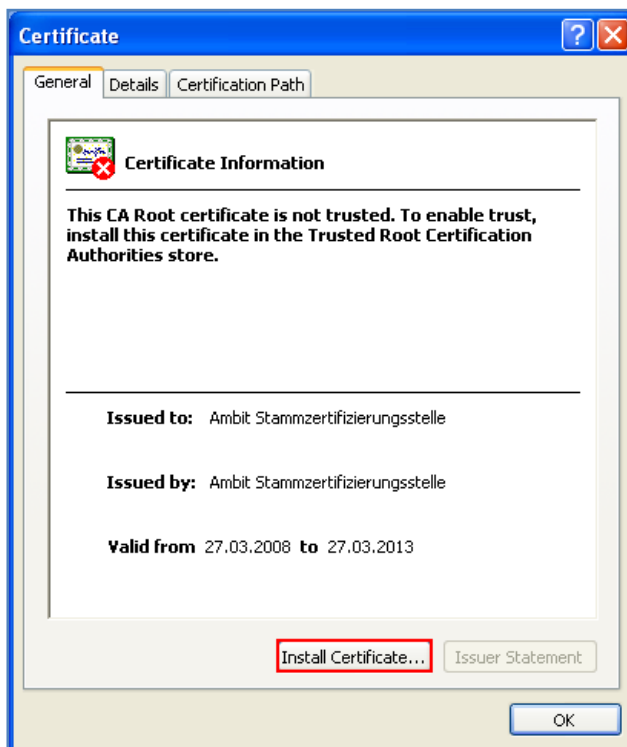
Click Save

Installation of the Certificate

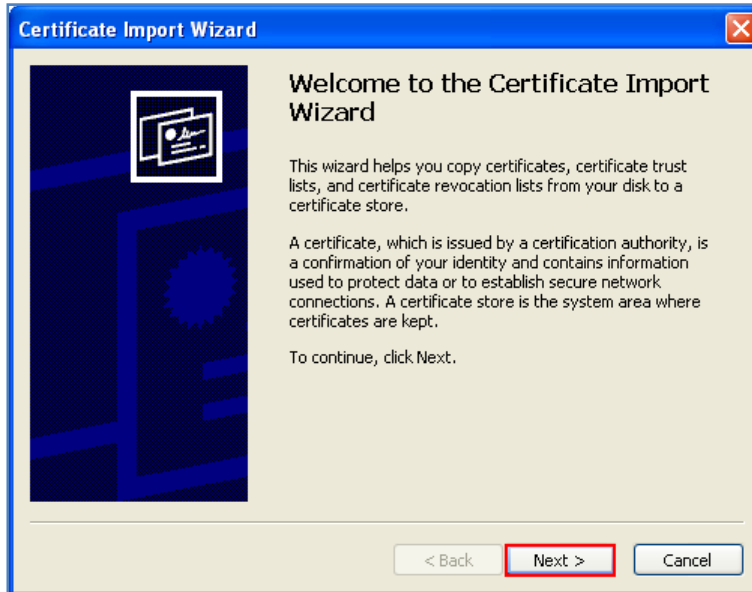
1. Click open



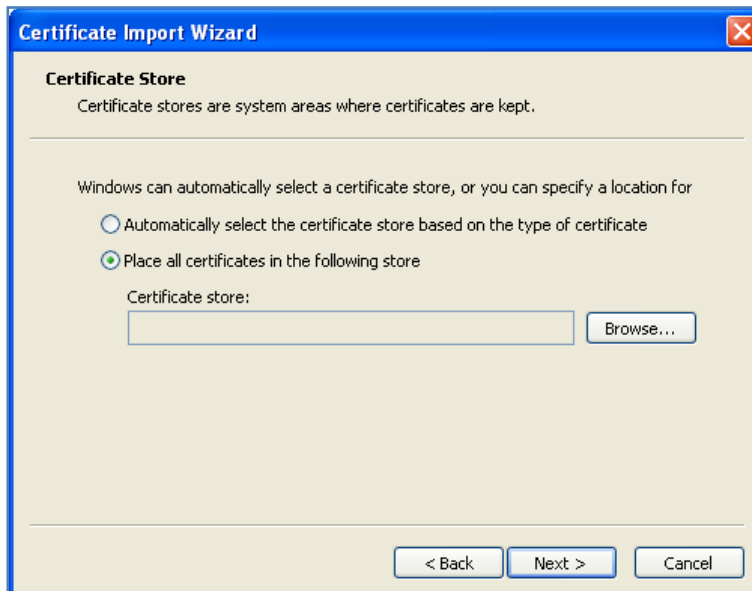
2. Install the Certificate



3. Choose "Next"



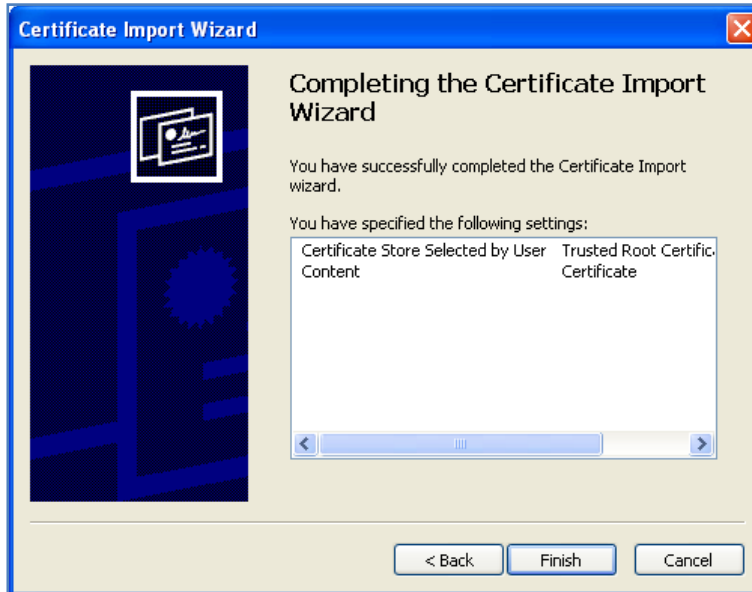
4. Select "Place all certificates in the following store" and click on "Browse"



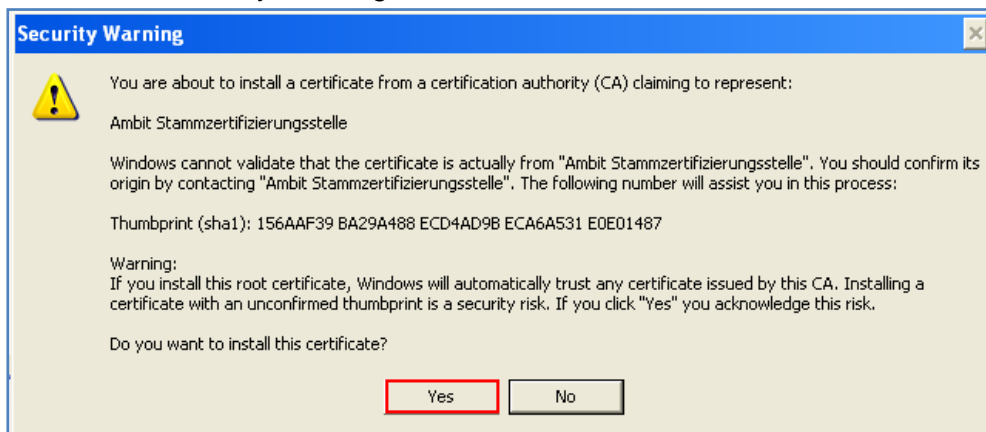
5. Select "Trusted Root Certification Authorities" and click OK



6. Choose "Finish"



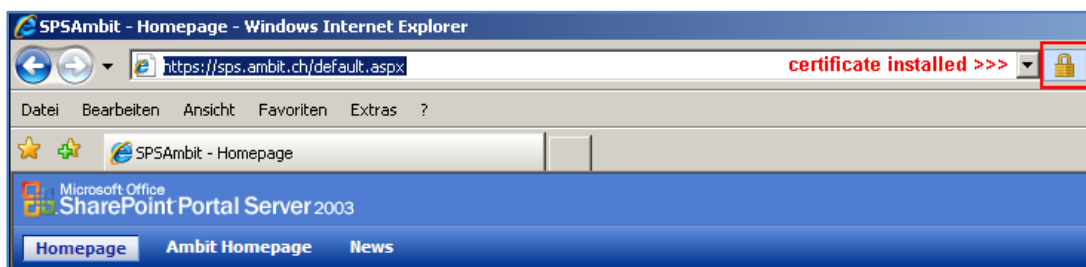
7. Confirm the Security Warning with "Yes"



8. Click OK

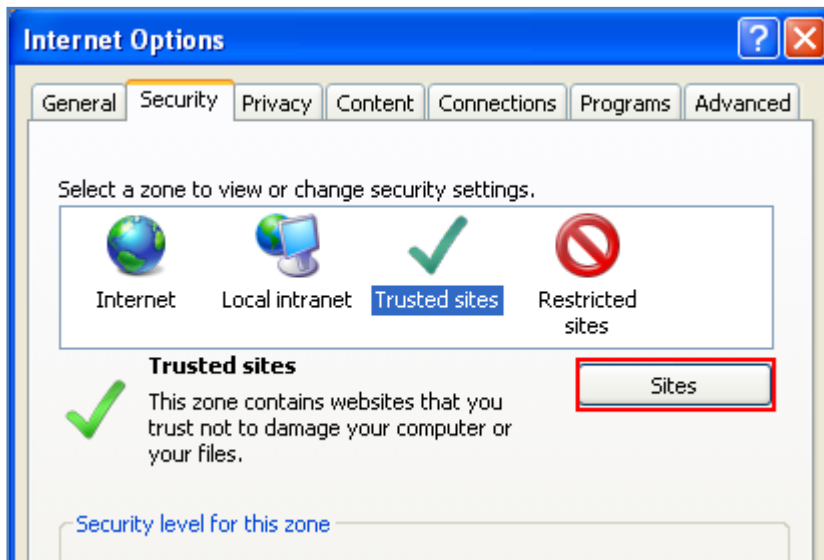


9. The Certificate is successful installed

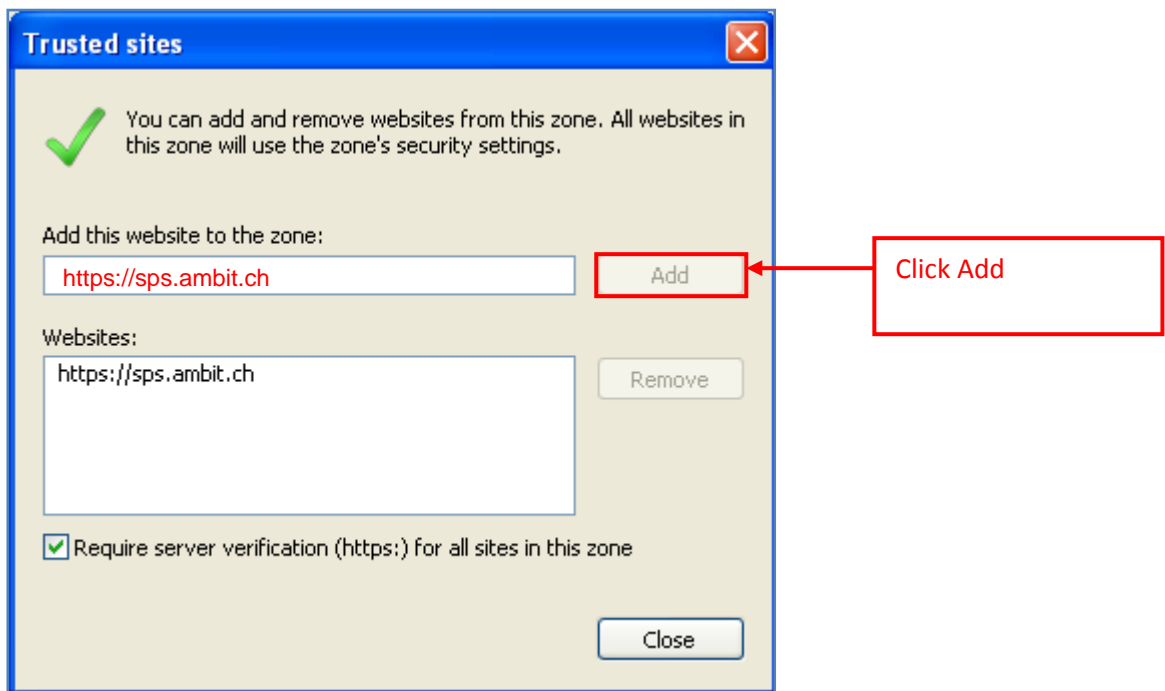


Add Ambit SharePoint-Webpage (https://sps.ambit.ch) as trusted site

1. Open the Internet Explorer
2. Choose Menu Tools
3. Internet Options
4. Tab Security
5. Click on Trusted sites
6. Click on Sites



Choose "Add"



And close

The Ambit SharePoint-Webpage is successful added as trusted site.